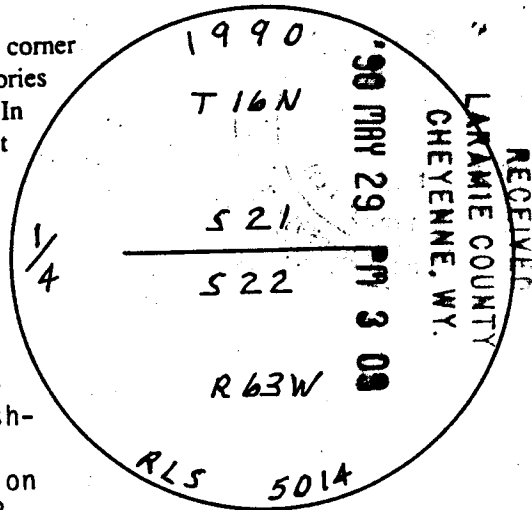


# Wyoming Certified Land Corner Recordation Certificate

This form is to be completed in accordance with W.S. 36-11-101, printed in black ink or typed, and shall be for one individual corner.

Describe below, or show in sketch attached to this form, the corner evidence found. Include condition and type of monument, accessories and ties. Describe any maintenance or rehabilitation performed. In the circle to the right, show monument inscription. If monument is determined lost or obliterated, restate the GLO or BLM original field note record; describe or show the procedure used to reestablish the corner and all data as above for a found monument.



070683

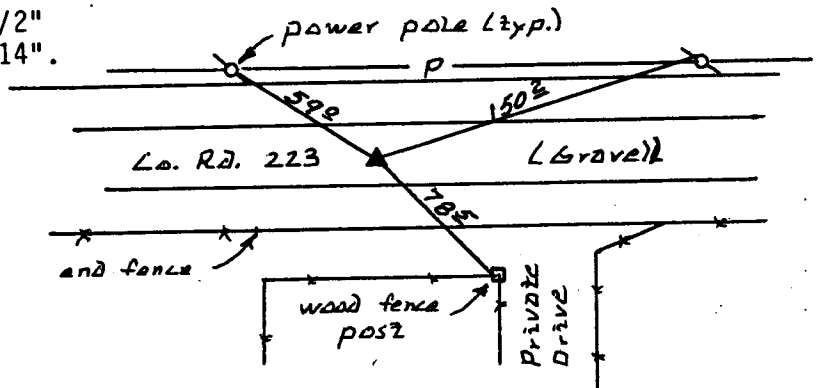
Field Date 4-11-90 Office Reference \_\_\_\_\_

After extensive field search, it was determined the best evidence for the re-establishment of the corner was the straight-line proportion between the re-established section corners on the northerly line of Section 22.

GLO notes attached

**Monument set:** #5 rebar with 2" aluminum cap stamped as shown; 6" below gravel road.

**References:** P-K nails with 1-1/2" galvanized washers stamped "5014".



State of Wyoming  
Office of County Clerk  
County of Laramie

This Certified Land Corner Recordation Certificate was filed for record on the \_\_\_\_\_ day of \_\_\_\_\_, 19\_\_\_\_, in Book No. T \_\_\_\_\_, R \_\_\_\_\_, on Alpha-Numeric coordinates R-11 and was noted on the Cross Index Plat.

County Clerk

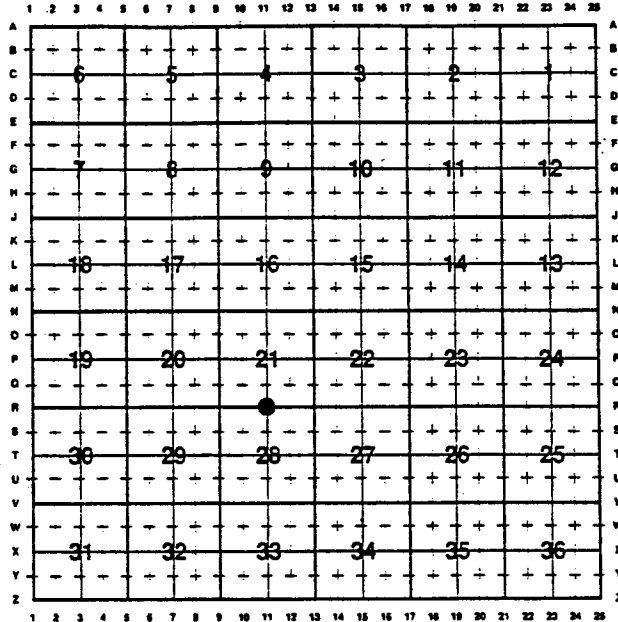
Corner Type:  Aliquot Corner  Other  
 Corner Name Quarter Section(s) 21 Meridian 6th  
 Township 16N Range 63W Page \_\_\_\_\_  
 Sheet 1 of 3

**Directions for using the  
Cross Index Plat**

Section, quarter and sixteenth corners will be marked with a dot at the corner location. The alpha-numeric coordinate number is then determined for the intersection of the two lines. A corner that applies to two or more townships shall be filed under all that apply by the use of photo copies.

Closing corners will be indexed under the township in which they control ownership. For 1/64, 1/256, 1/1024 and non-aliquot corners lying between grid designations, mark the appropriate grid area with a dot and use the index code to the north and west (local systems may be used if the method is approved by the County Surveyor or Clerk and a written description of its use is filed in the front of each book of certificates).

**Cross Index Plat**



**State Plane Coordinates (optional)**

Zone            W    WC    EC    E            feet/meters

NAD 1927             NGVD 1929             NAD 1983             NAVD 1988

North (Y) = \_\_\_\_\_            East (X) = \_\_\_\_\_            EL = \_\_\_\_\_

Latitude \_\_\_\_\_            Longitude \_\_\_\_\_

Scale Factor \_\_\_\_\_            Geoid Height \_\_\_\_\_

**Certification**

I, Raymond E. Connin, Wyoming PLS-~~RE~~ 5014 certify that I, or others under my supervision, have performed the work as described above and completed this form.

Company or Agency Hall & Walters, Inc.

Mailing Address \_\_\_\_\_

Street Address 873 North Cleveland

City, State, ZIP Loveland, CO 80537

Telephone, FAX 303-663-1177



Raymond E. Connin  
Signature, Seal, and Date

23. 150

Township 16 North Range 63 W

Chains 19.96

~~for quarter section corner  
Corner of sections 28, 29, 30, 33  
Riding 2<sup>nd</sup> rate soil grows good~~

~~North Redden sections 28, 29  
variation 15.35¢~~

40.00

80.00

~~bet a granite boulder 16 X 9 X 6  
for quarter section corner  
bet a granite boulder 17 X 11 X 6  
for corner to sections 20, 21, 22, 24  
Riding 2<sup>nd</sup> rate soil grows good~~

~~East On a Rowston line  
between sections 21 & 25  
variation 15.35¢~~

40.00

19.80

~~bet temporary 1/4 section corner  
intersect of 1<sup>st</sup> line 11 under  
south of corner to sections  
21, 22, 21 to 25 from which  
corner is run~~

151 23

Township 16 North Range 63 W

Chains 39.90

between sections 21 & 25  
On a true line

bet a granite boulder 17 X 8 X 5  
for quarter section corner

19.60

Corner to sections 20, 21, 22, 24  
Riding 2<sup>nd</sup> rate soil grows good

~~North Redden sections 20, 21, 24  
variation 15.35¢~~

40.00

80.00

~~bet a granite boulder 16 X 10 X 5  
for quarter section corner  
for corner to sections 14, 15, 20, 21  
Riding 2<sup>nd</sup> rate soil grows good~~

~~East On a Rowston line  
between sections 16 & 21  
variation 15.35¢~~

40.00

19.15

~~bet temporary 1/4 section corner  
intersect of 1<sup>st</sup> line 15 under  
south of the corner to sections~~



0011

0011